

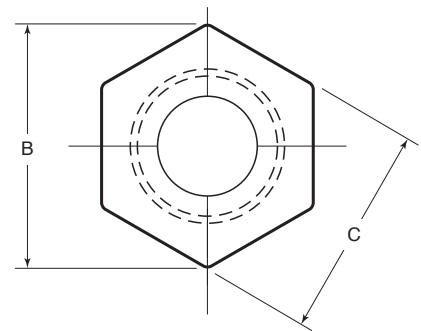
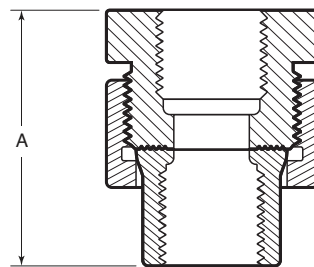
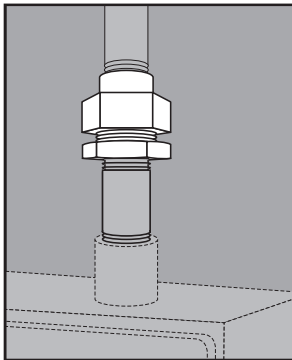
STAINLESS STEEL - HAZARDOUS LOCATION FITTINGS

UNF FITTINGS



APPLICATION

- Also known as female explosion-proof unions
- Designed for use in hazardous area locations to join threaded lengths of conduit or to connect rigid conduit to devices, boxes, or enclosures
- Manufactured in stainless steel to help prevent corrosion
- Can be installed using ordinary hand tools and require little maintenance or repair
- Provided in a bright, polished finish that does not require touch up or painting



PRODUCT DETAILS

Material:

-Body: 316 SS
-Nut: CF8M (316 SS)
-Insert: 316 SS

Standards:

ASTM A351, ASTM A479

Country of Origin:

Manufactured in USA

Part Number	Size	Weight/ 100 (lbs.)	-----Dimension (in.)-----		
			A	B	C
UNF50	½ in.	57	1.88	1.71	1.50
UNF75	¾ in.	77	1.88	2.06	1.81
UNF100	1 in.	105	2.18	2.29	2.00



© 2015 GIBSON STAINLESS & SPECIALTY, INC. - REV 2/2017

PO BOX 847, GREENSBURG, PA 15601
PHONE: 1-800-945-4316 • FAX: 724-838-1544

WEB: GIBSONSTAINLESS.COM